



Sehome High School

Community Presentation

May 24, 2016



dawson



Proposed Site Plan

The site plan illustrates a comprehensive school campus layout. Key features include:

- Academic Building:** A central corridor connects various classrooms and specialized rooms such as Art, Robotics, Science, Physics, Math, Social Studies, and English.
- Central Courtyard:** A large, landscaped area with numerous trees and walkways provides a central gathering space.
- Recreational Facilities:** The campus includes a baseball field, softball field, soccer field, tennis courts, and a football field.
- Support Spaces:** A central kitchen, theater, gym, and library are integrated into the design.
- Site Details:** The plan includes elevation markers (e.g., +270, +280, +285) and dimensions (e.g., 100' x 100') to specify the scale and topography of the site.

Proposed Floor Plans

Level 3

- THIRD FLOOR LEGEND**
- CIRCULATION
 - Circulation
 - COUNSELING
 - EXTENDED LEARNING
 - GENERAL ED
 - LIBRARY
 - LIFE SKILLS
 - MECH. / ELEC.
 - OUTDOOR SPACE
 - PE
 - PERFORMING ARTS
 - SUPPORT

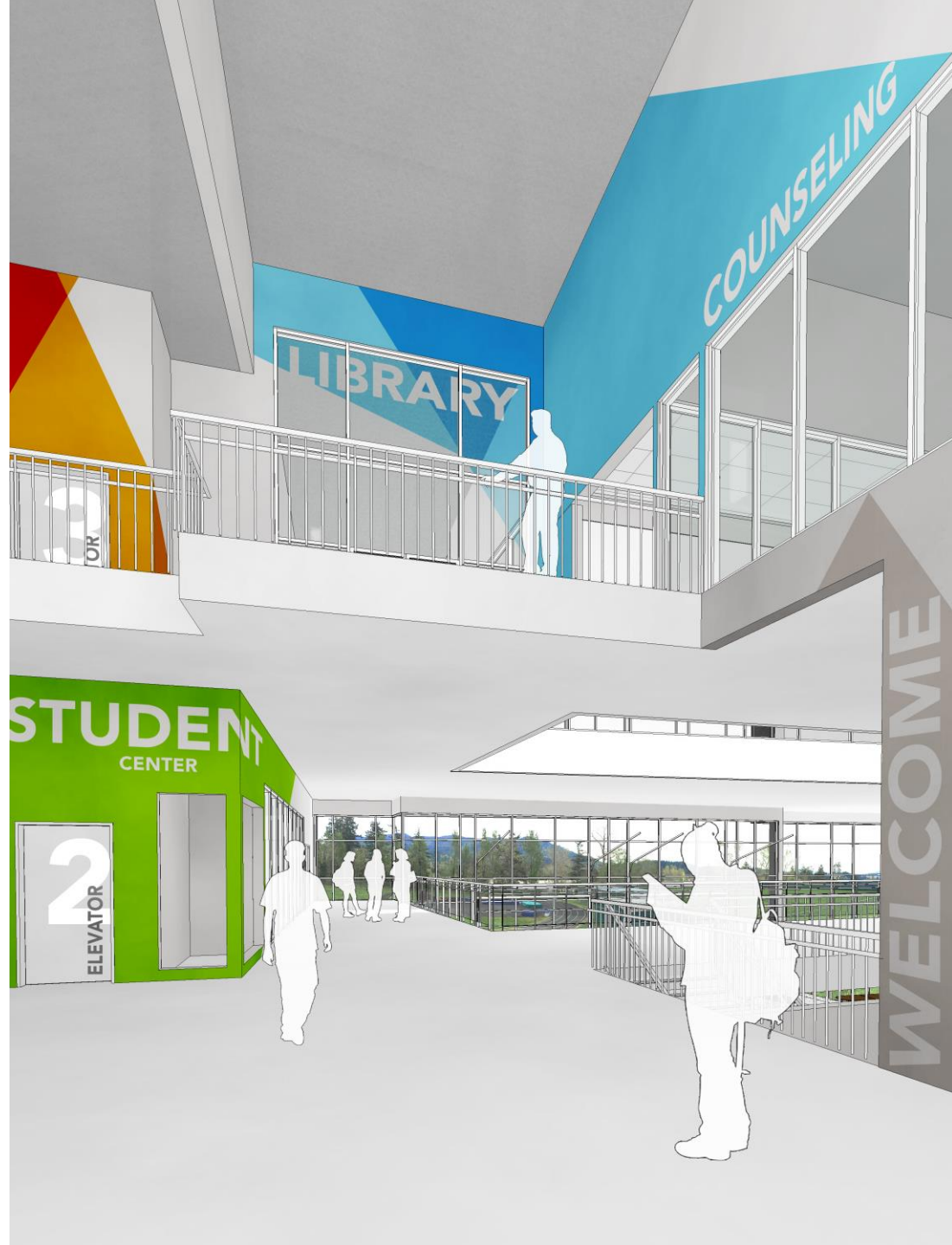
- SECOND FLOOR LEGEND**
- ADMIN
 - CIRCULATION
 - EXTENDED LEARNING
 - FACULTY
 - GENERAL ED
 - LIFE SKILLS
 - MECH. / ELEC.
 - NURSE
 - PE
 - PERFORMING ARTS
 - SUPPORT

Level 2

- FIRST FLOOR LEGEND**
- BUSINESS
 - Career Technical Education
 - CIRCULATION
 - Circulation
 - COMMONS
 - CTE
 - EXTENDED LEARNING
 - GRADS
 - MECH. / ELEC.
 - PE
 - SCIENCE
 - SUPPORT
 - VISUAL ARTS

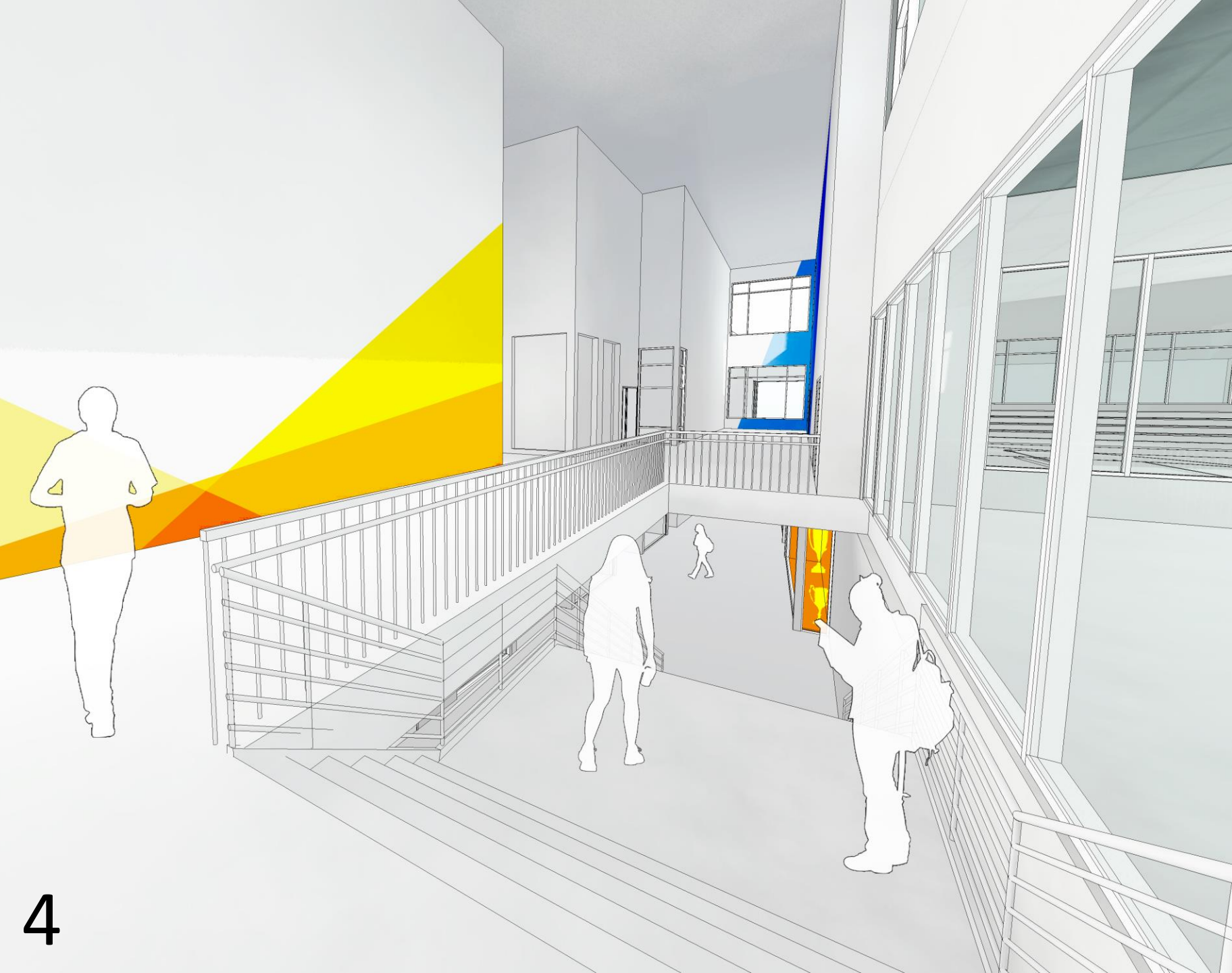
Level 1

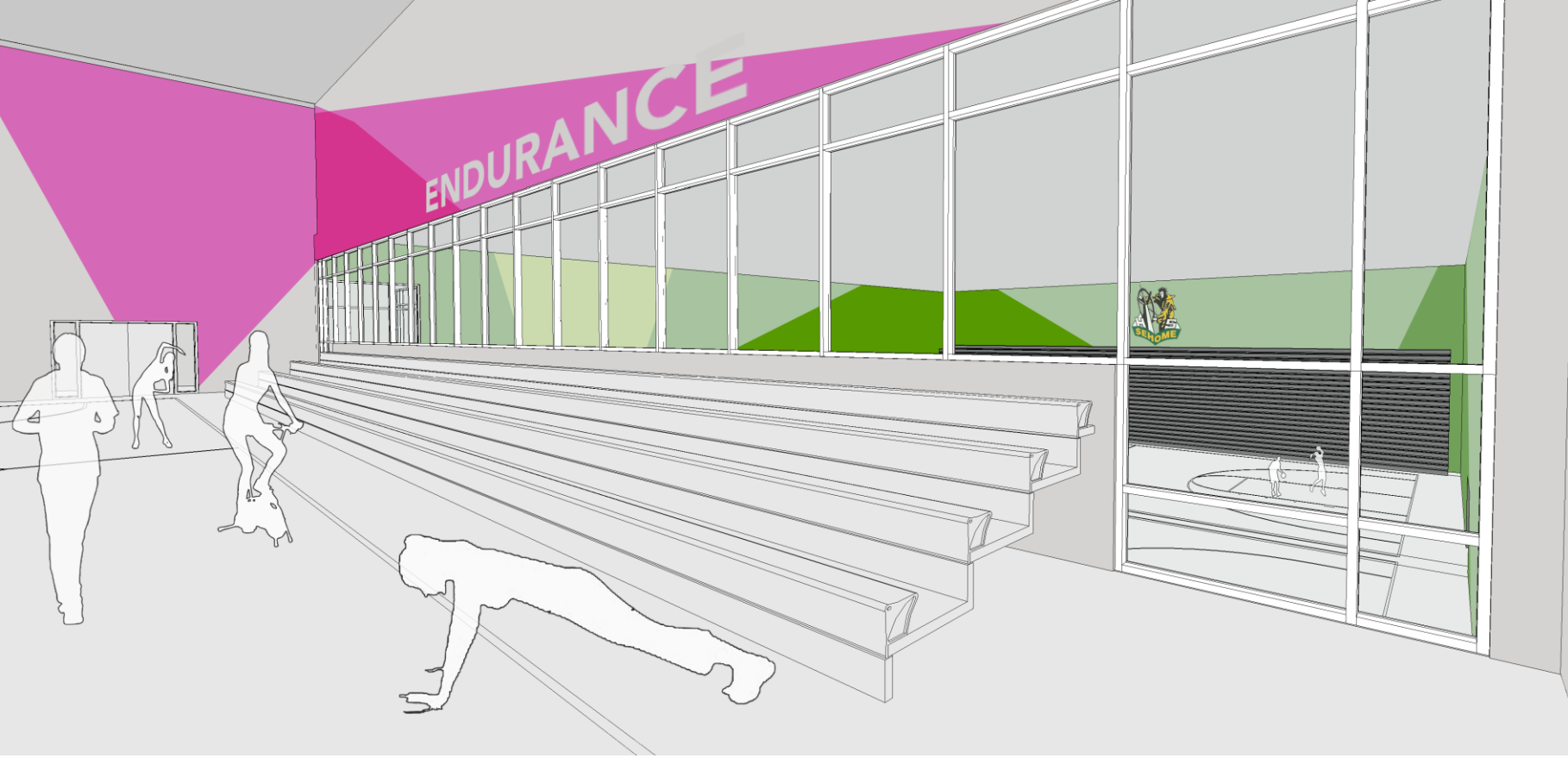




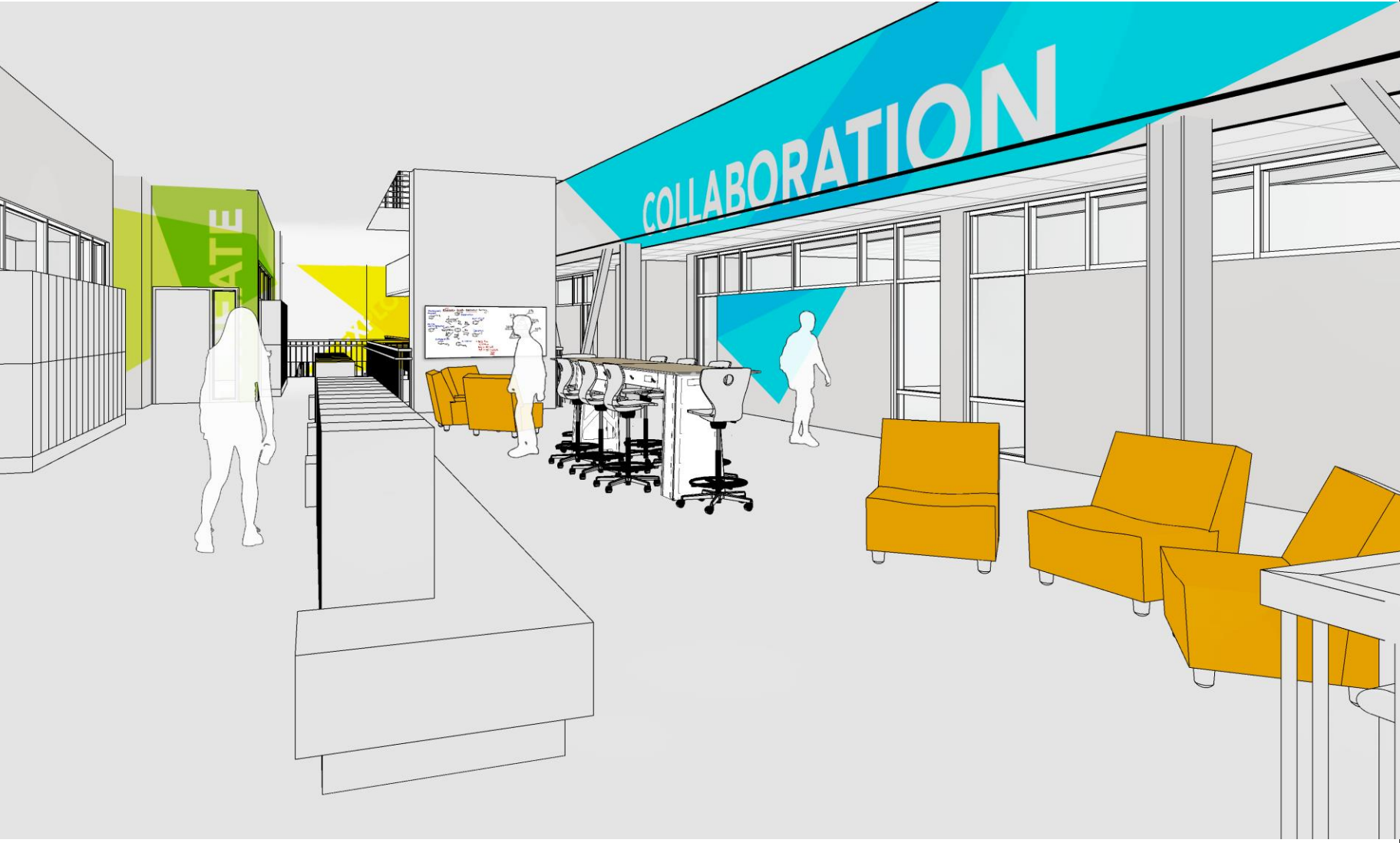


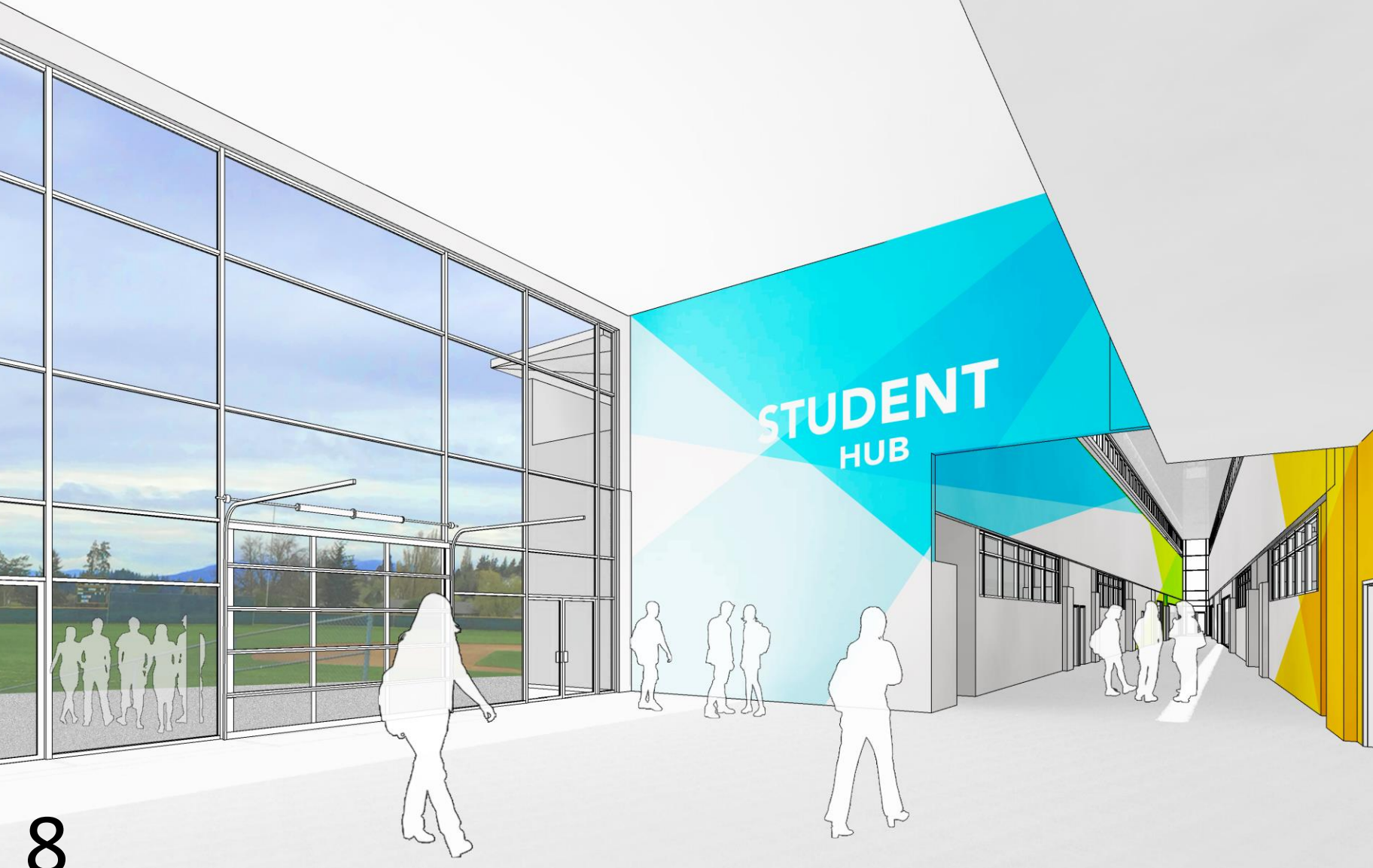




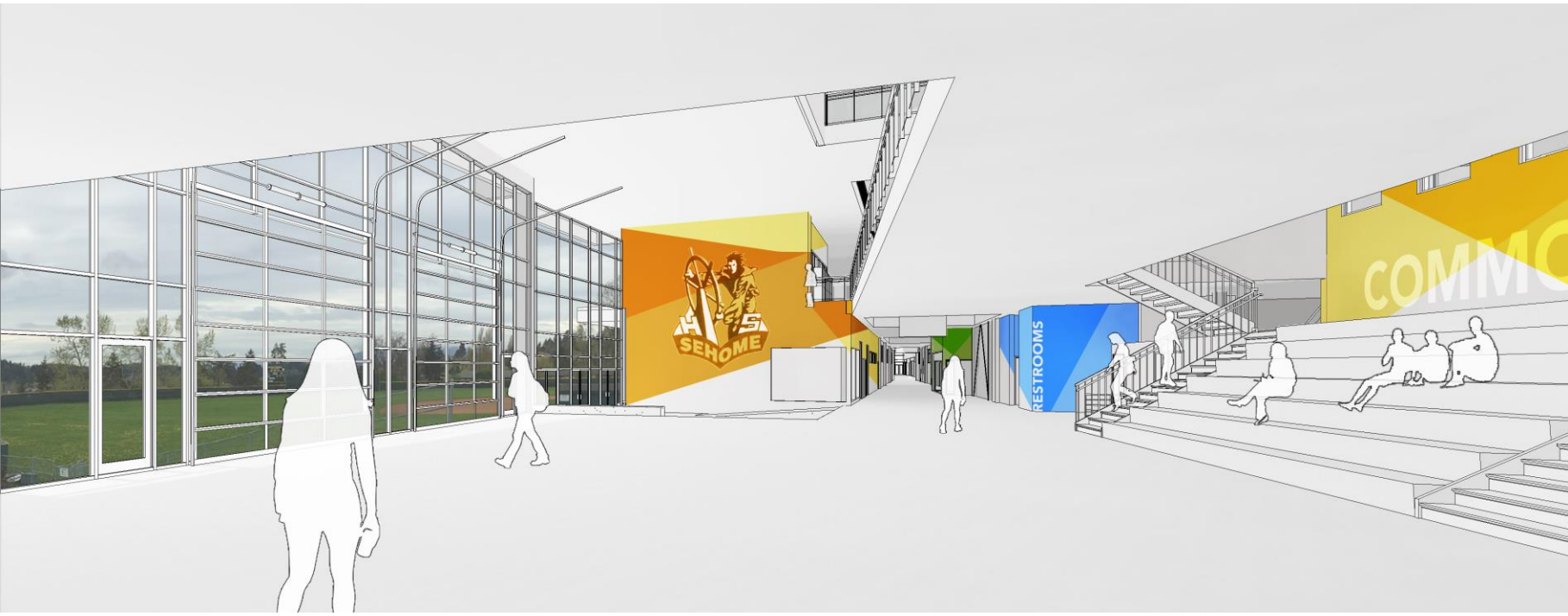
































Next Steps

- **Consider your feedback as we formulate our recommendation to Dr. Baker**
- **Submit recommendation to Dr. Baker**
- **Design team will work over the summer to refine and develop the site and building plans**
- **Future Design Committee Meetings**
- **Future Project Updates**

